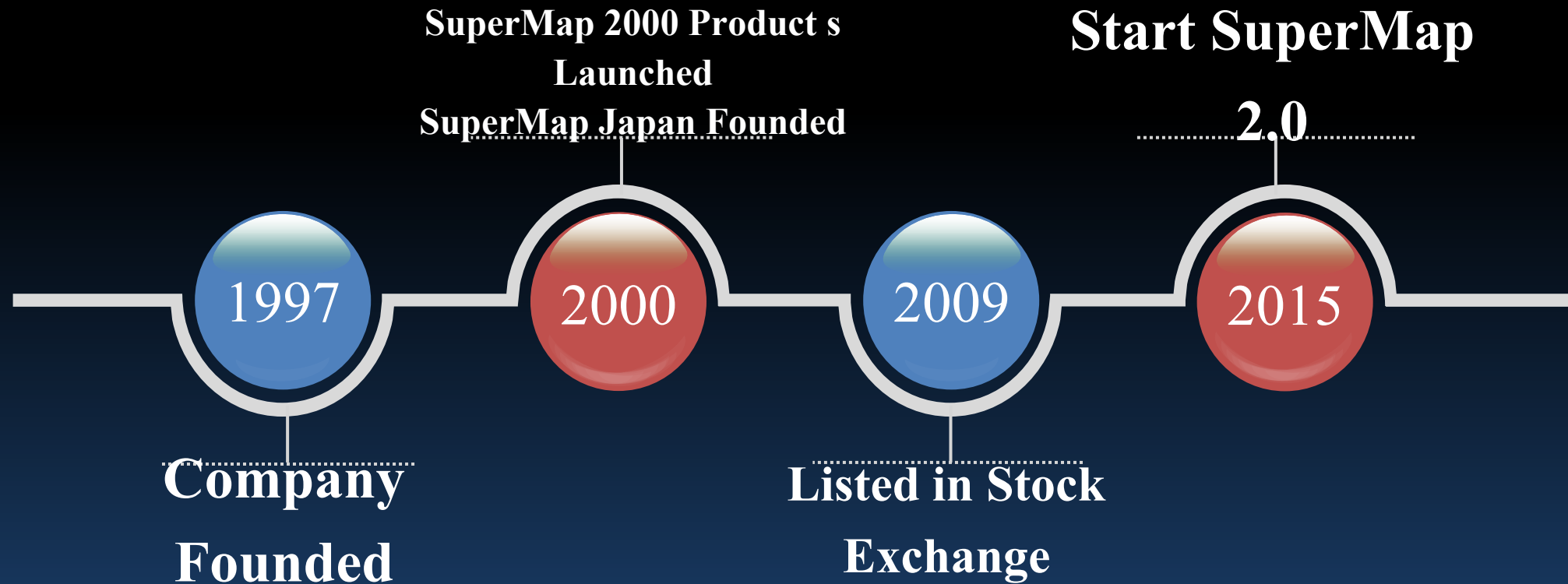


Technology Development of GIS Software in Cloud Era

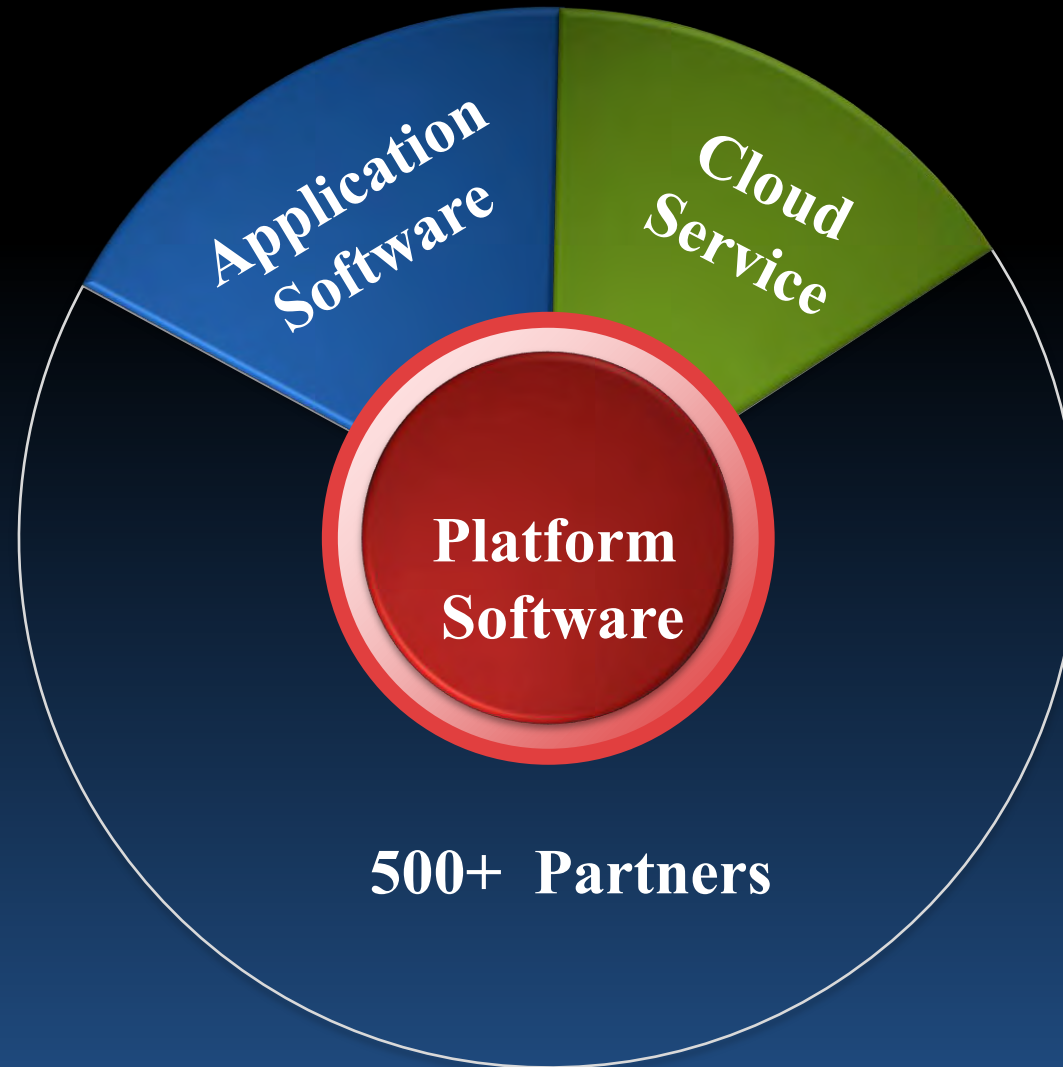
Dr. Wang Kanghong, VP
SuperMap Software Co., Ltd
Tokyo 17th Nov. 2015



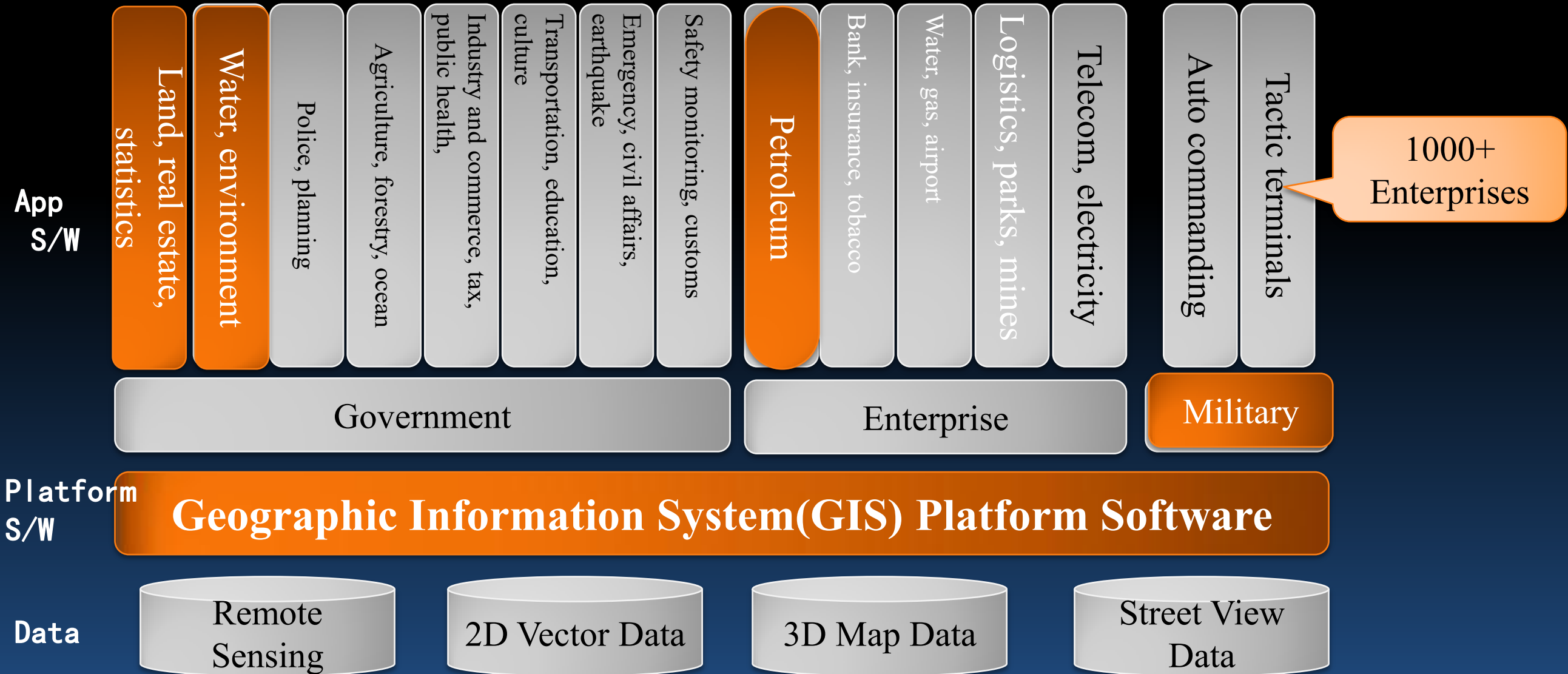
History of SuperMap



Business Positioning: 2 Software + 1 Service



SuperMap's Business



SuperMap's Key IT Partners

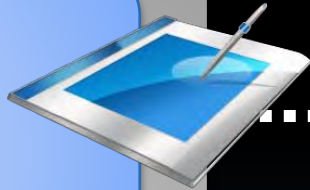


SuperMap GIS 8C - Cloud/Terminal Integration Product Structure

Mobile

Mobile GIS Development Kit

iMobile for iOS
iMobile for Android



Light Mobile SDK

iClient for iOS
iClient for Android
iClient for Win8



Cloud GIS S/W

iPortal
iServer
iExpress
iCloudManager

PC

Components GIS Development Kit

iObjects Java
iObjects .NET
iObjects C++



Desktop GIS

iDesktop
iDesktop Cross



Browser SDK

iClient for JavaScript
iClient for Flash
iClient for Silverlight
iClient3D for Plugin
iClient3D for WebGL



Four Chariots in Cloud GIS

GIS Cloud Management Tool
SuperMap iCloudManager

new

GIS Portal Platform
SuperMap iPortal

GIS Application Server
SuperMap iServer

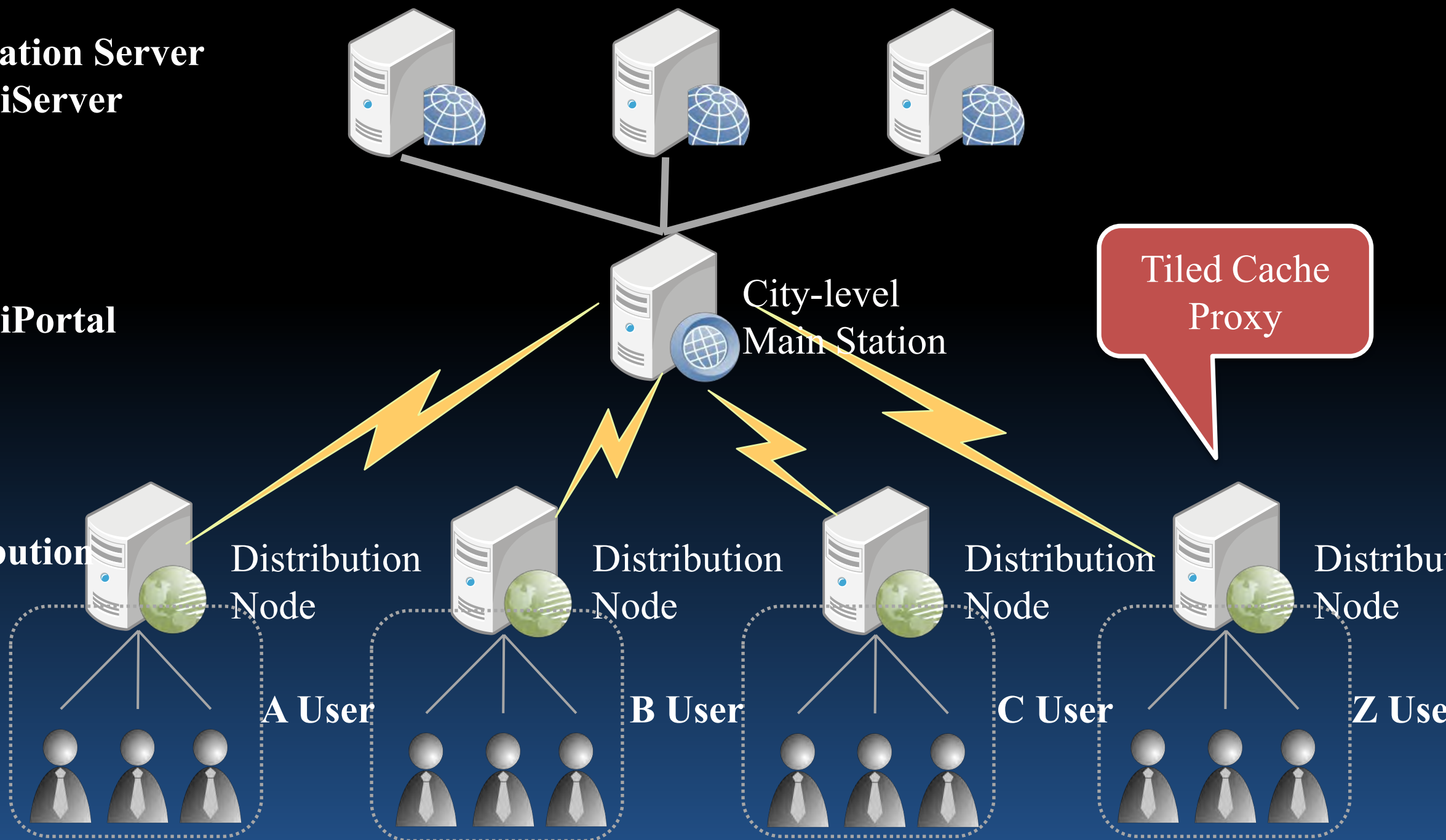
GIS Distribution Server
SuperMap iExpress

GIS Application Server
SuperMap iServer

GIS Portal
SuperMap iPortal

GIS Distribution
Server
SuperMap
iExpress

P8

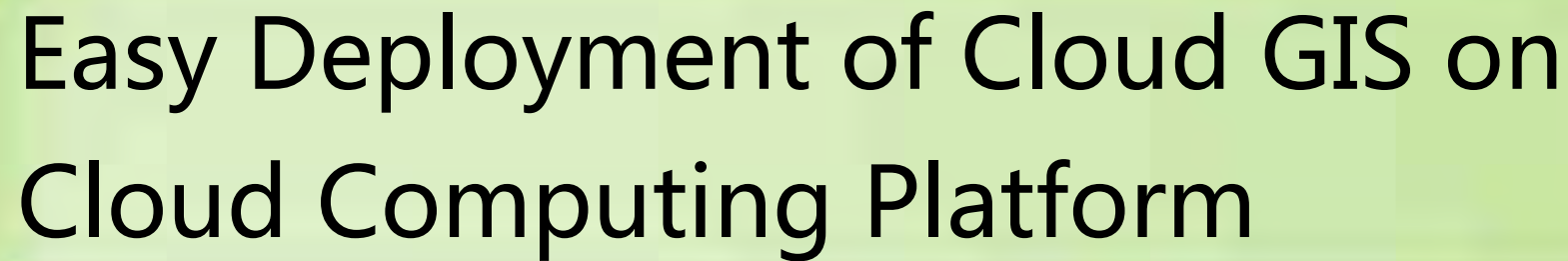


What is SuperMap iCloudManager?

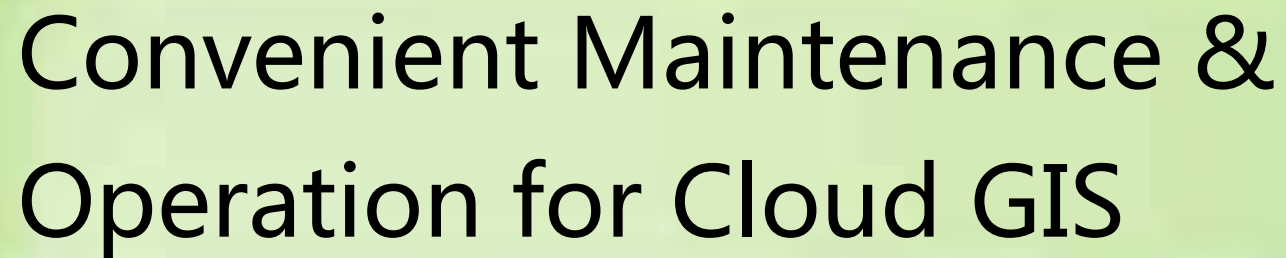
Management Platform of Cloud
GIS



Easy Deployment of Cloud GIS on
Cloud Computing Platform



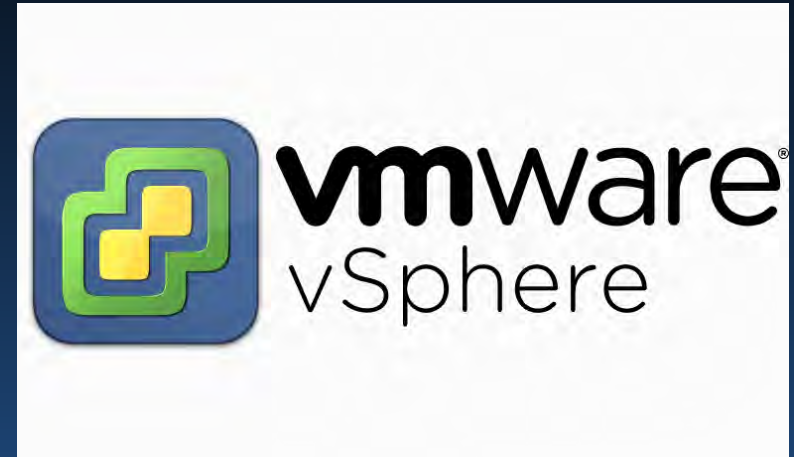
Convenient Maintenance &
Operation for Cloud GIS



iCloudManager Supports these Cloud Computing Platforms



Huawei



Geo-SaaS



Cartography



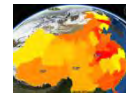
Web App



Mobile App



3D App



Geo-PaaS

Sharing Platform for Businesses

GIS Portal Node

GIS Computing Node

Business Service Node

...

SuperMap iPortal

SuperMap iServer



Geo-DaaS



ORACLE



基础GIS数据库

Geo-IaaS

SuperMap iCloudManager



Server



Storage

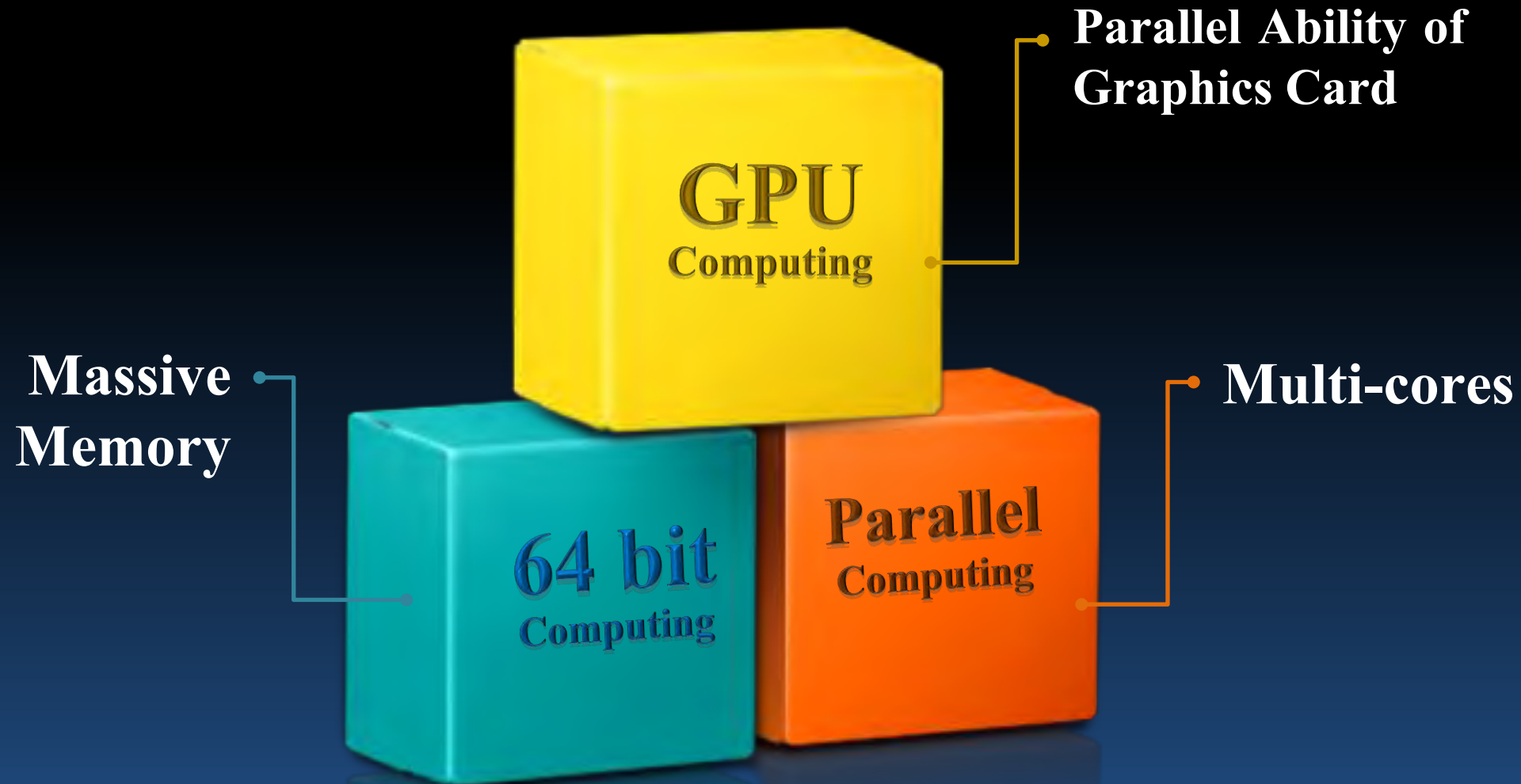


Network

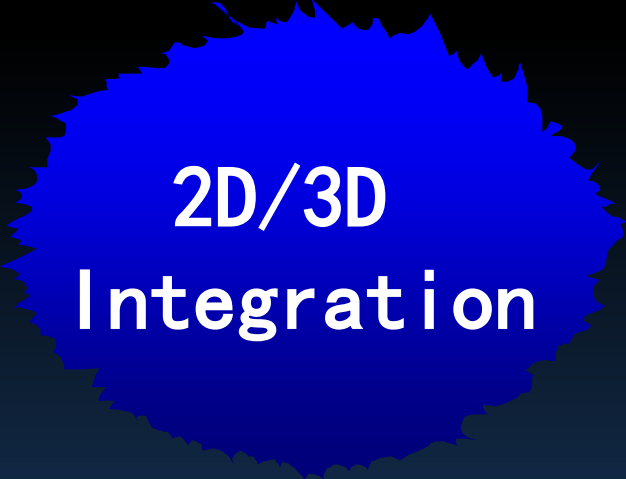


Load Balancing

Three Musketeers with High Performance to Ensure Cloud Computing Capability



3D GIS



**2D/3D
Integration**



**Oblique Image
3D**



Support BIM

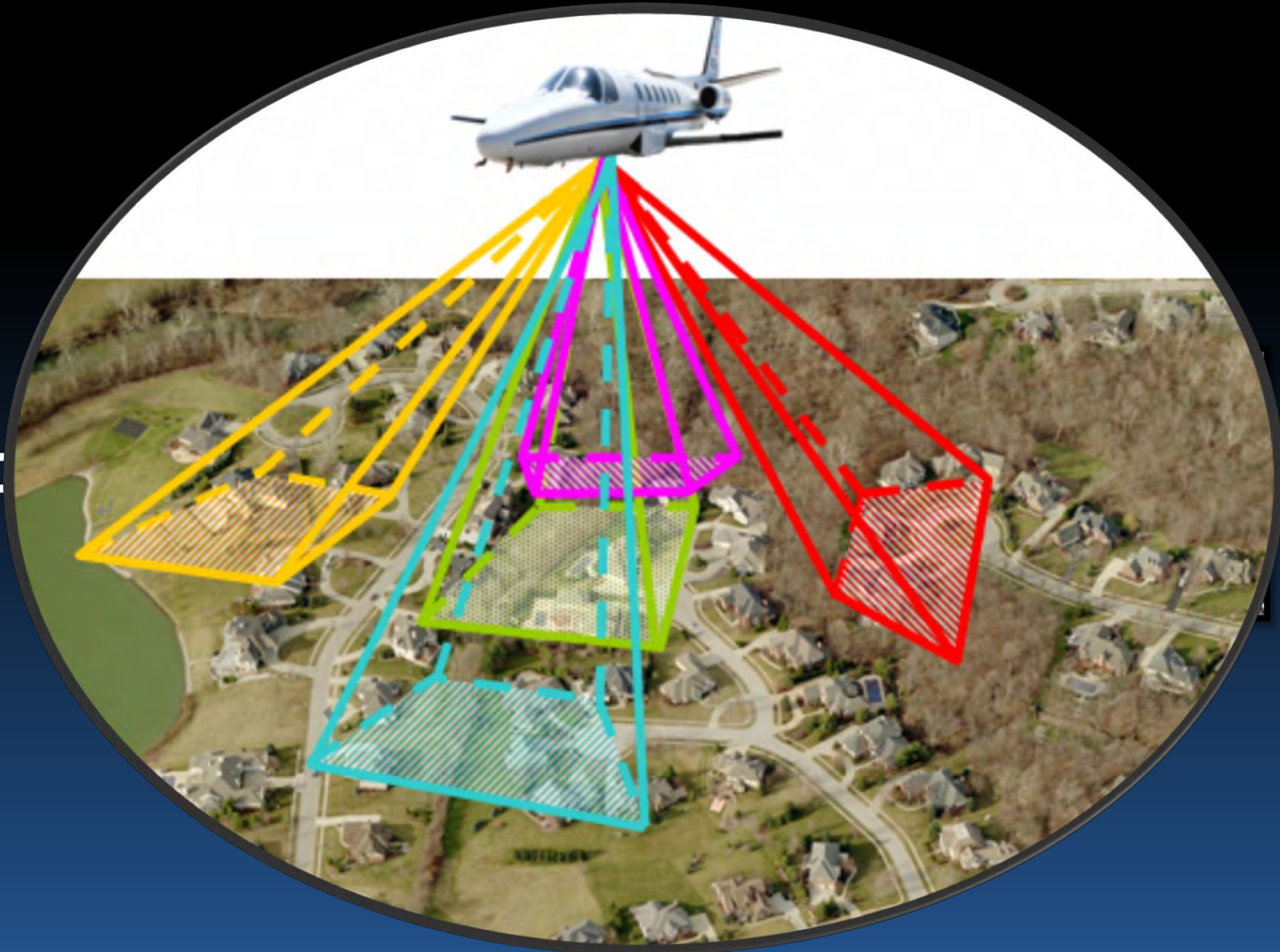
Oblique Image is Fully Supported



+



=



BIM is Supported



BIM Monomer

Design
+
Implementation

+
Maintenance
& Operation



GIS Geographic Environment

Different Cloud + Terminal: Mobile



Public GIS Cloud: SuperMap Online



Hosted Data Publish

Hosted App Services

**Online Rental;
Cut Cost;
Help Start-ups**

**No Purchase of GIS
S/W**

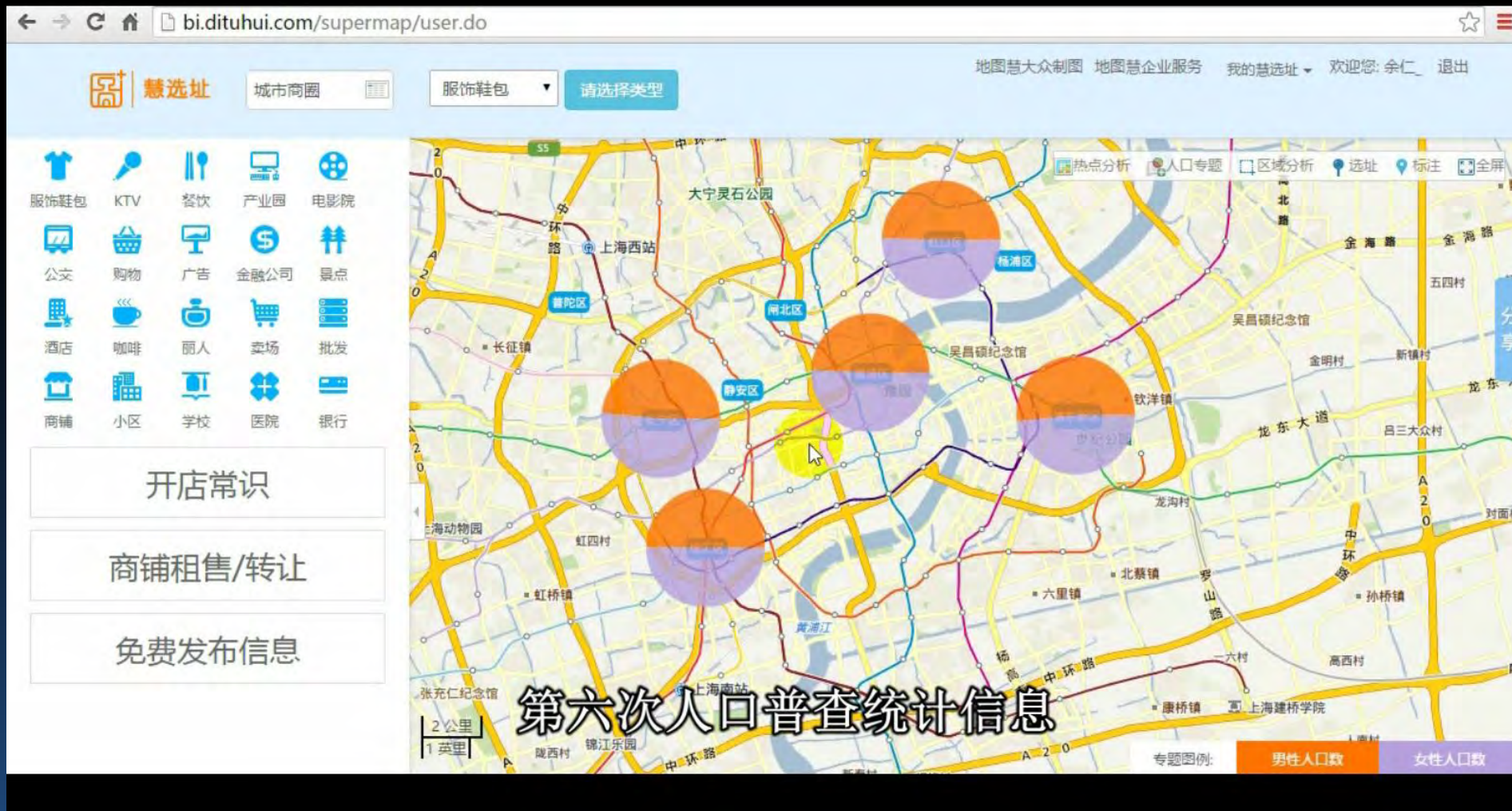
**No Computer Room
Needed**

**No Purchase of
Server**

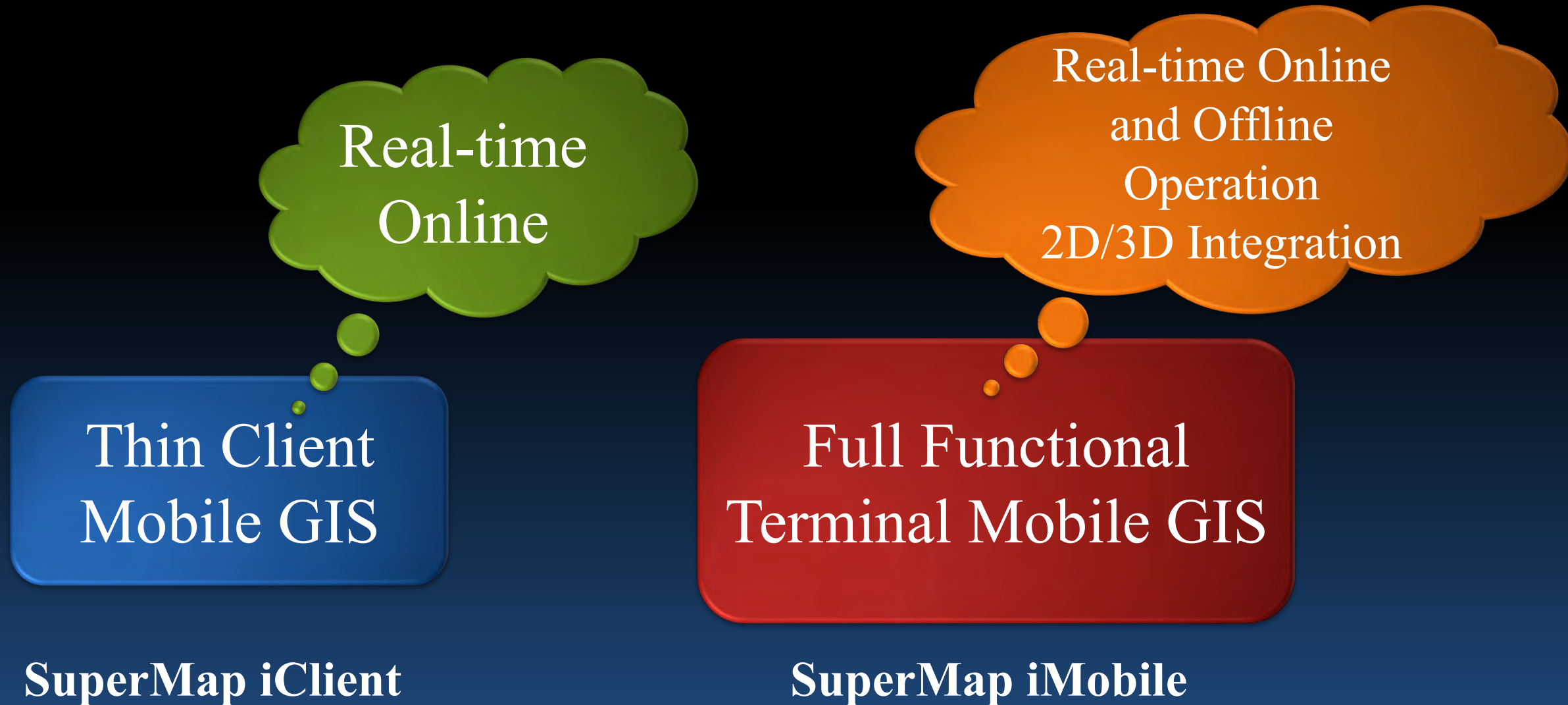
Public Cloud GIS Application: Dituhui Business Analysis



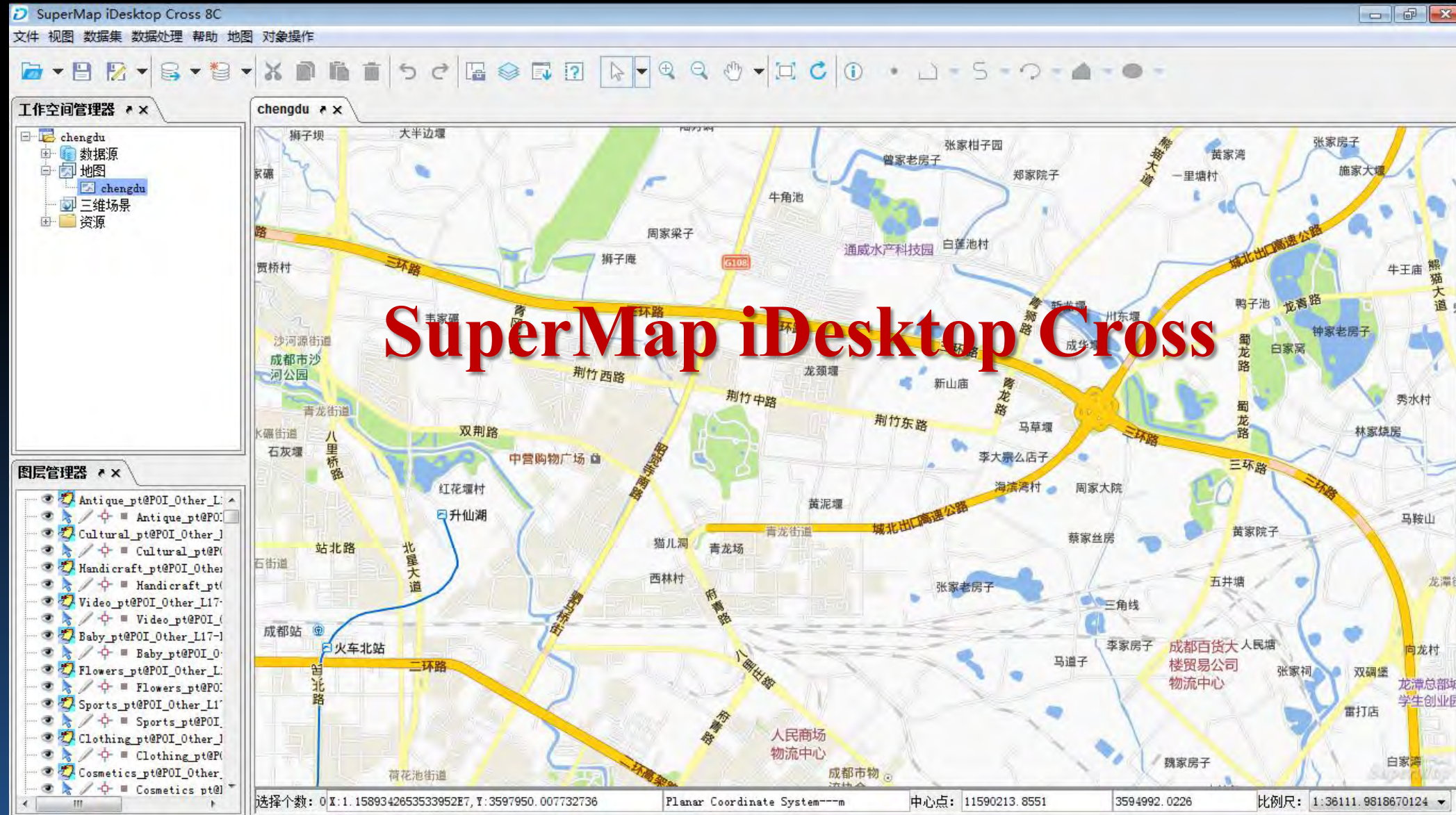
Business Analysis Demo: Help Micro Business Choose Location



Mobile GIS



Open Source Desktop GIS – Innovative Business Model



Open Source Desktop GIS

More Open (Open Java Source Code)

A light gray downward-pointing arrow indicating a flow from the first box to the second.

More Agile in Development

A light gray downward-pointing arrow indicating a flow from the second box to the third.

Innovate Business Model with All
Kinds of Wisdom

Operating System Supported by iDesktop Cross

Windows

- Windows 2003 Plus

Linux

- Redhat Linux
- Suse Linux
- Ubuntu Linux
- Qiling Linux
- Ningsi Linux
- Red Flag Linux

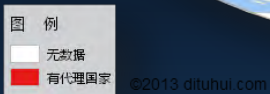


iDesktop Cross is Launched at

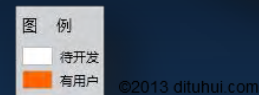
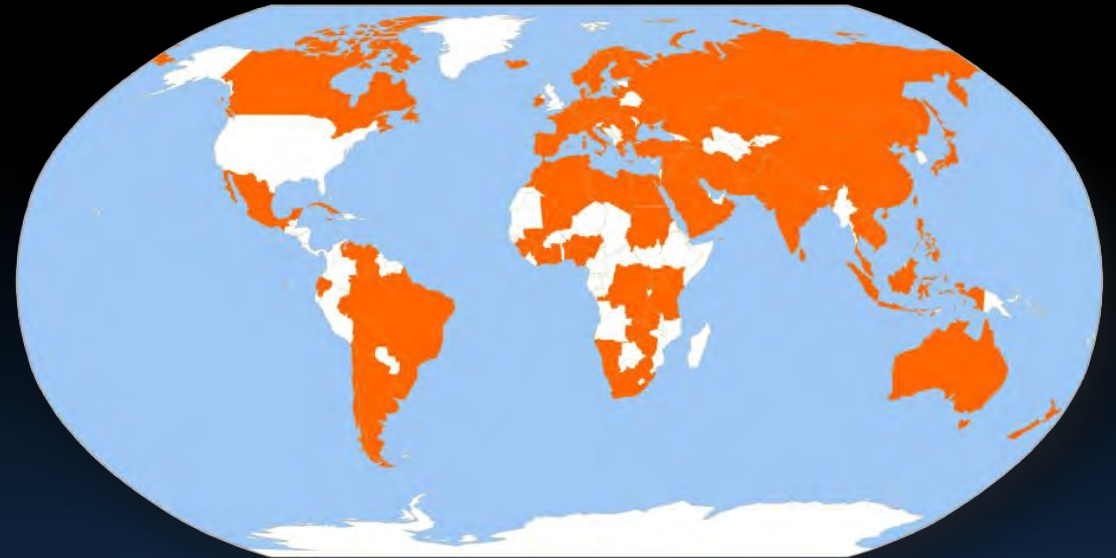


www.oschina.net

Global SuperMap



Distributors (Over 30 Countries)



End Users (Over 100 Countries)

SuperMap's International Applications

Global E-service System for Hitachi Japan

The screenshot displays the 'e-Service | OWNER'S SITE GIS' web application. The left sidebar contains the following search criteria sections:

- 検索条件** (Search Conditions): Includes buttons for '一覧表示' (List View), '移動軌跡' (Movement Trace), and '分布集計' (Distribution Summary).
- 機械情報** (Machine Information): Fields for '機種コード・モデル名' (Machine Code/Model Name) and '事業所コード' (Business Code), with a '参照' (Reference) button.
- 地域情報** (Regional Information): Fields for 'エリア指定' (Area Selection) and '場所指定' (Location Selection), with '参照' and 'クリア' (Clear) buttons.
- 円検索** (Circle Search): Fields for '経度' (Longitude), '緯度' (Latitude), and '半径' (Radius) in km, with a '中心指定' (Center Selection) button.
- 稼働情報** (Operation Information): Fields for 'アワメータ' (Anemeter), 'アラーム検索' (Alarm Search), and '最終位置取得日' (Last Location Acquisition Date), with range selection buttons.
- サービス情報** (Service Information): Includes '検索' (Search) and 'クリア' (Clear) buttons.

The right side of the interface shows a world map with country labels in Japanese. A search bar at the top right contains the text '地図を検索'. The bottom of the map area includes the Google logo and copyright information: '地図データ ©2011 Geocentre Consulting, MapLink, Tele Atlas - 利用規約'.

The system provides a variety of online services, query, statistical analysis and other functions for more than 100 thousand construction machinery all over in the world, providing the customers with excellent after-sales service.

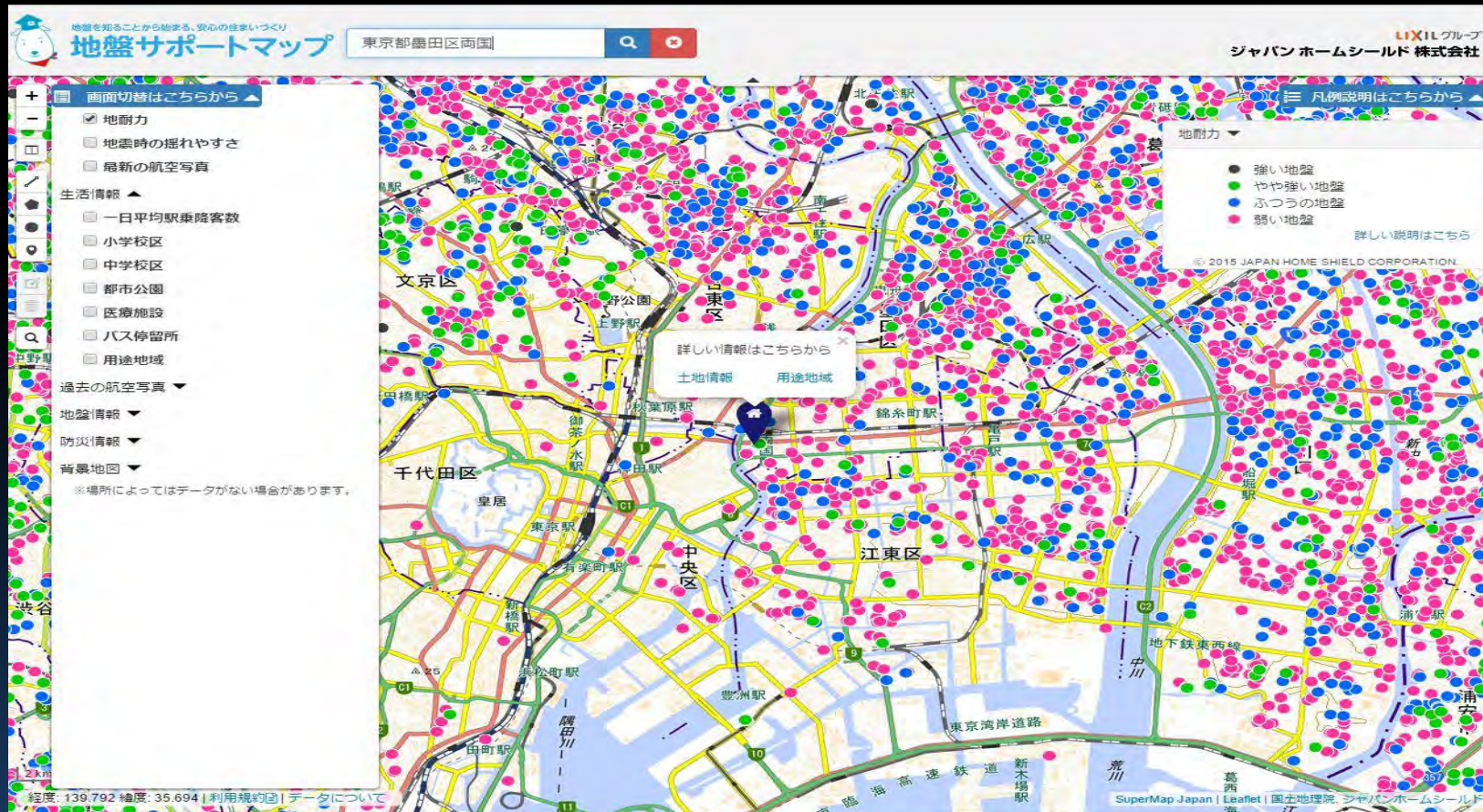
Forest GIS Mobile Application Japan



With high-resolution aerial images as base map, the application supports GIS positioning, tracks recording, forest information query, measurement, video recording and other editing functions in the field.

It's frequently used in UAV forest survey, disaster prevention forest laser measurement, radiation survey, and so on.

Whole Japan Land Information Cloud Service System Japan



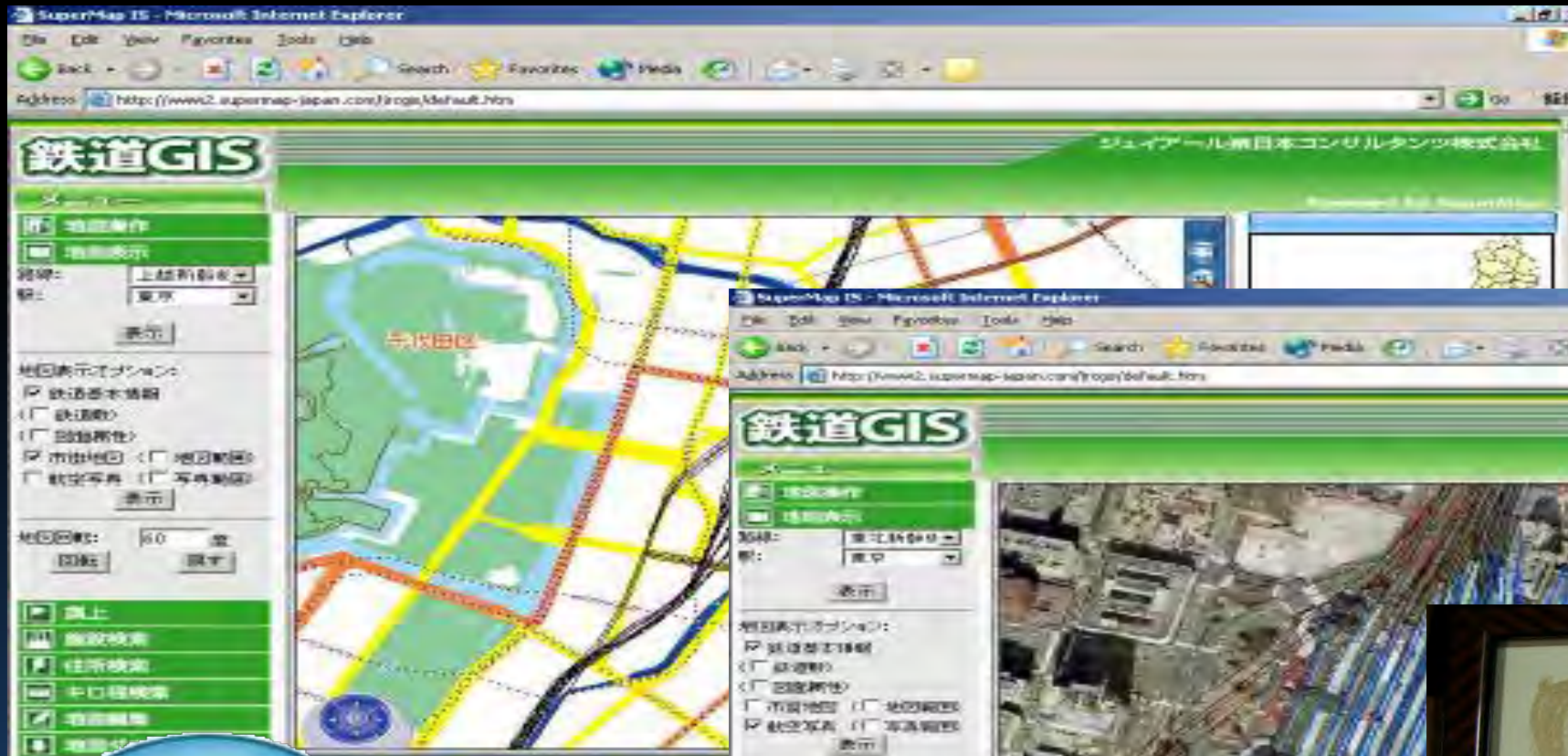
Based on SuperMap Japan cloud map service, the system provides powerful data analysis service. The residents can view houses foundation strength condition on one map and query the land information report in any place in whole Japan.

A creative application in the disaster reduction industry.

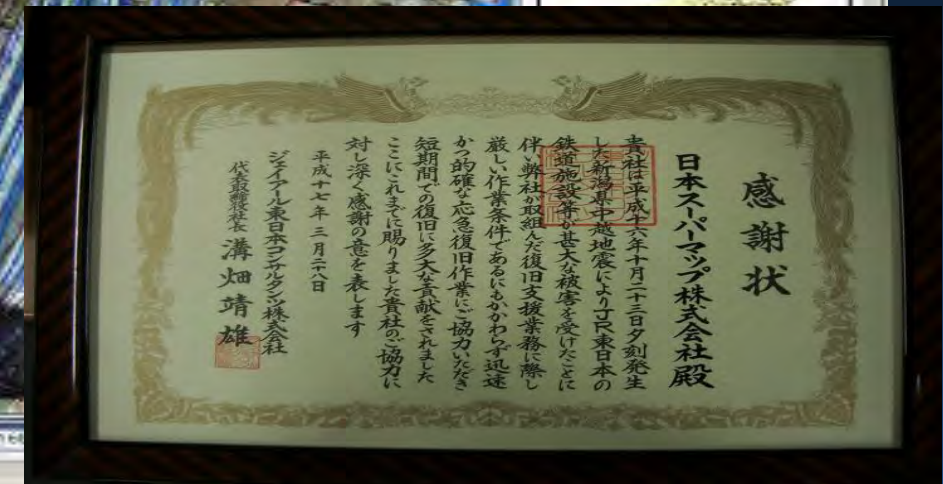
Highly praised by residents and governments.

Shinkansen, (bullet train) Railway GIS of Japan Japan

Data > 1TB

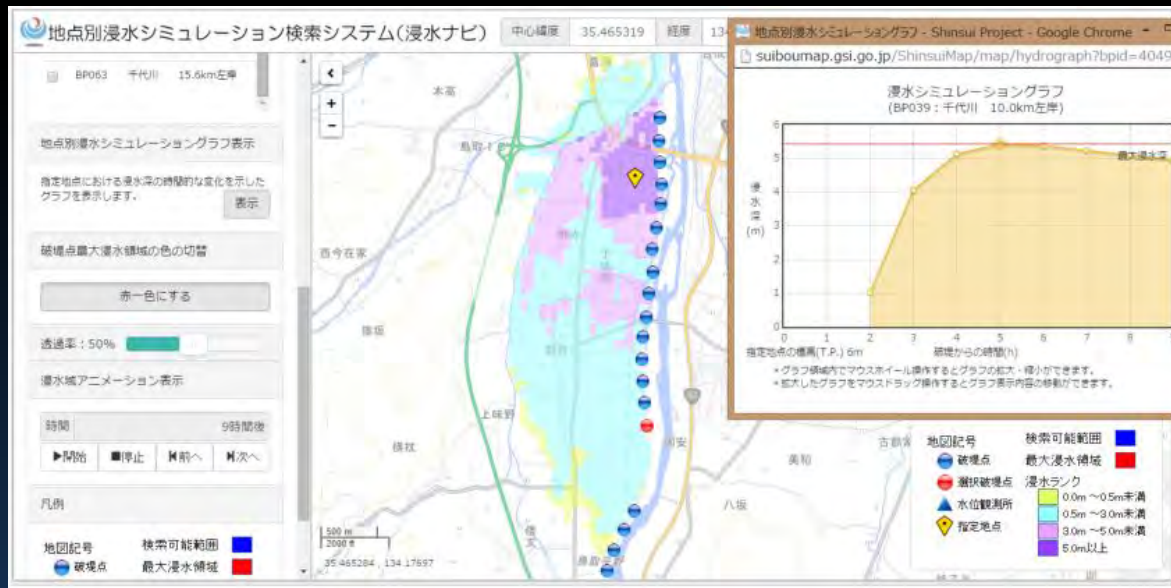


SuperMap
Inside



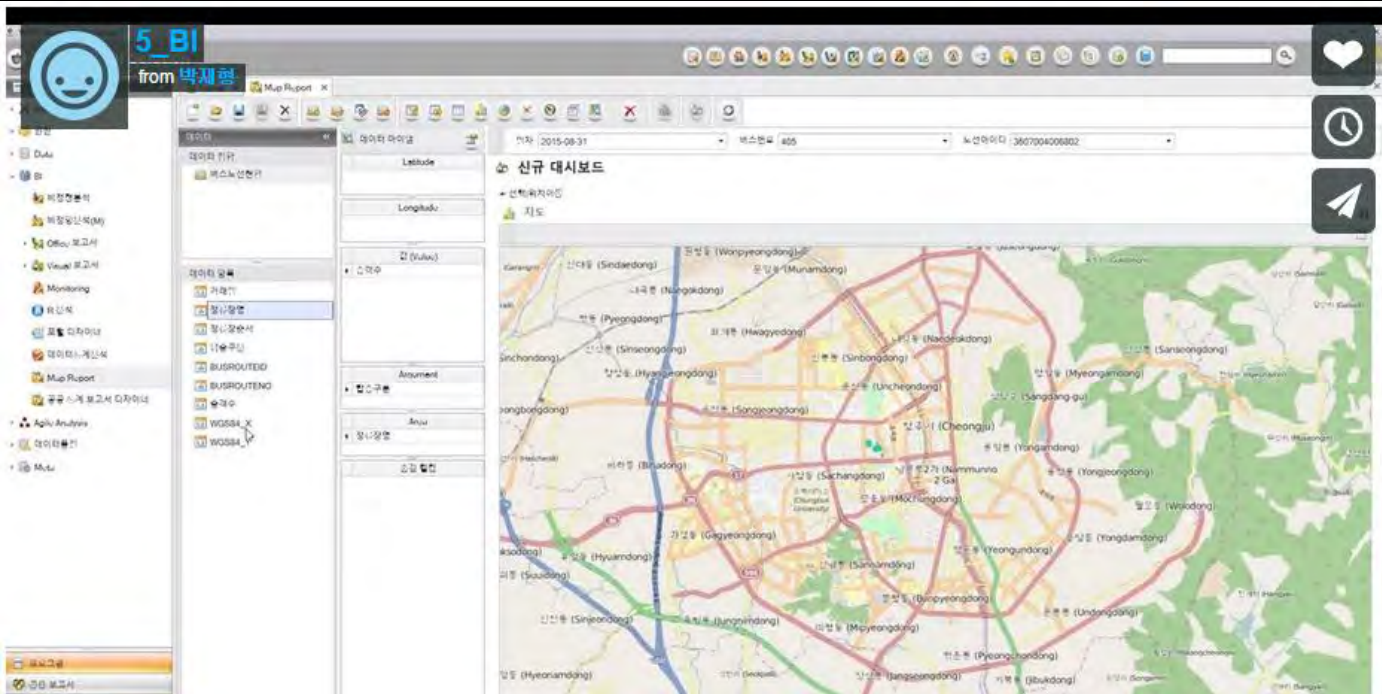
Flooding Simulation Query System Japan

It's developed for the Geospatial Information Authority of Japan.



People can query the flooding simulation information if the river dam bursts in any place, which is displayed on the map through various types including graphs, charts, animation, etc.

Business Intelligence System Korea



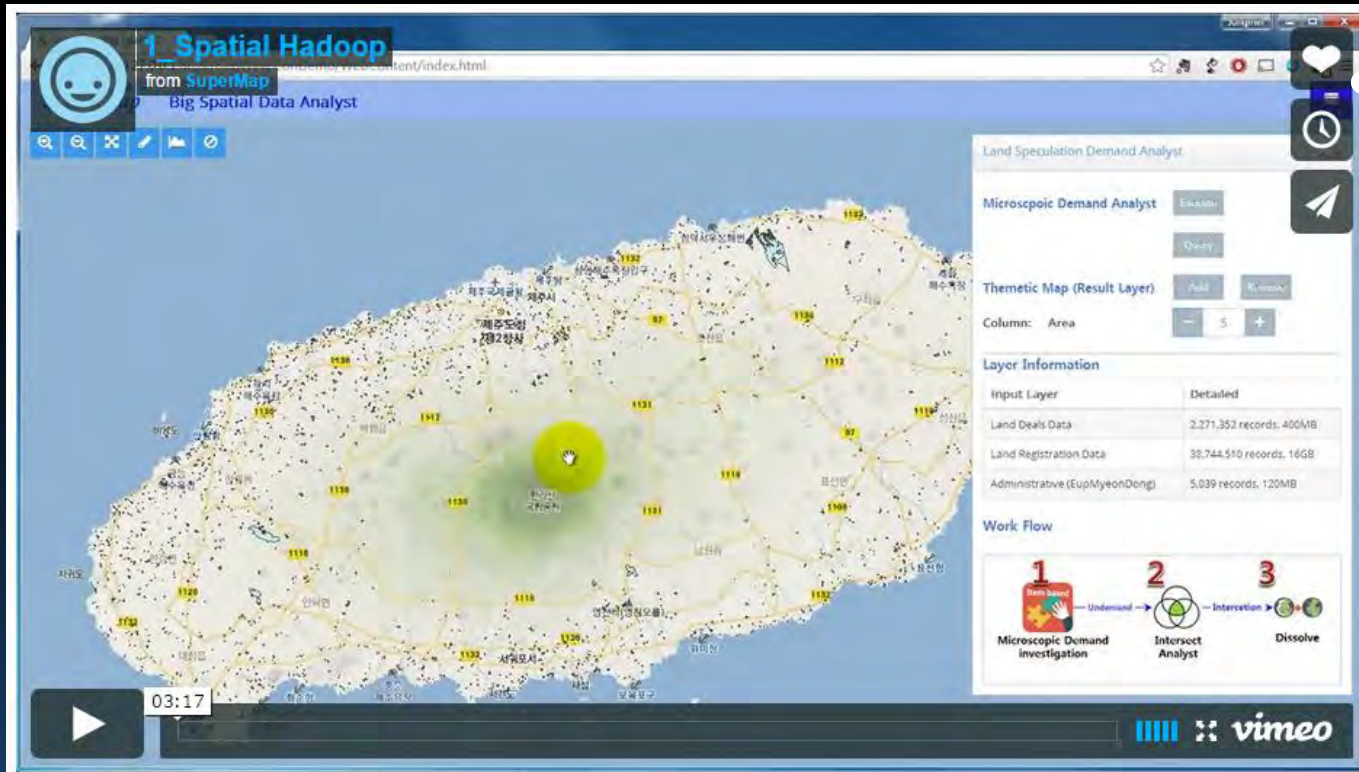
- It is a multi-dimensional visualizing tool, specialized to SuperMap which provides prompt insight from data analysis by processing real-time big data, using in-memory DBMS.

CAAS Indoor REAL 3D Navigation Korea



It offers accurate location information inside a building where GPS signals are barely available. It is a combination of IoT & 3D technology, as well as SuperMap's powerful GIS technology.

Spatial Hadoop for SuperMap Korea



It's a big-data solution which can manage, process and analyze big data with high speed

Public Transit Platform-Korea

- It provides Public Transit Route, Car Navigation, and Pedestrian Route Service for Mobile Applications, which are available in multi-languages (Chinese, Japanese, and English).



ALL-NET Asset Tracking System Korea



- It offers flexible asset tracking capabilities for users. Based on Geographic Information, it processes the location of assets(e.g. cargo, car, vessel, and aircraft), human resources, or M2M-based information real-time.

More in Other Countries...

- **European Environment Agency**
- **Swedish Church**
- **Nykoping Kommn**
- **Region Skane**
- **Ordnance Survey Great Britain(OSGB)**
- **Ordnance Survey Ireland (OSI)**
- **Center Mauritius Poilice Department**
- **Land Ministry of Egypt**
- **Ethiopia Telecom**
- **UN Conservatory Office in Cuba**
- **Ministry of Agriculture Forestry and Fisheries of Japan**
- **Institute of Land Resource Strategy Research of Ministry of Land, Transportation and Infrastructure**
- **Parliament of Turkey**
- **Saudi Arabia Tourism Office**
- **Ministry of Agriculture ,Fishery and Forestry of Cambodia**
- **Ministry of Home Affairs (MHA) Singapore**
- **Singapore Technology Electronics (ST)**
- **Land Administration of Laos**

Contact US

- **SuperMap Japan**
 - <http://www.supermap.jp>
 - 2-13-4 Shiba, Minato-ku, Tokyo, 105-0014, Japan
 - TEL:+813-5419-7911 FAX:+813-5419-7910
- **SPH:SuperMap reseller in Korea**
 - <http://www.supermap.co.kr>
 - jrlee@sphinfo.co.kr
 - 13F Donghwa Bldg., 25-5, Yeouido-dong, Yeongdeungpo-gu, Seoul
 - TEL:+82-2-785-9970 Fax:+82-70-8677-1919

ありがとうございます

